

Chem-Impex International, Inc.

Tel: (630) 766-2112

E-mail: sales@chemimpex.com

Shipping and Correspondence:

935 Dillon Drive

Wood Dale, IL 60191

Fax: (630) 766-2218

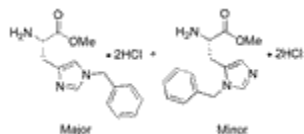
Web site: www.chemimpex.com

Manufacturing site:

825 Dillon Drive

Wood Dale, IL 60191

Product Specifications



Catalogue Number 06072

Product ***N*^{im}-Benzyl-L-histidine methyl ester
dihydrochloride**

L-His(Bzl)-OMe•2HCl

Molecular Formula C₁₄H₁₇N₃O₂•2HCl

Molecular Weight 332.23

Appearance White powder

Appearance of Solution Clear, colorless solution (50 mg/mL in MeOH)

Water Content (Karl
Fisher) ≤ 1%

TLC System n-Butanol/Acetic acid/H₂O (4:2:2)
Chloroform/MeOH/Acetic Acid/H₂O (45:13:1:2)
Ethylacetate/Pyridine/Acetic Acid/H₂O (60/30/9/16.5)
Plate: silicagel 60 F₂₅₄
Detected by: UV, ninhydrin, chlorine-tolidine

Residual Solvents Toluene: ≤ 12%

Titration Chloride Content: ≤ 20% (AgNO₃)

Assay ≥ 69% (Elemental analysis based on Nitrogen content)

Purity by TLC ≥ 98%

Storage Store at 0-8 °C

For Laboratory Use Only