

Chem-Impex International, Inc.

Tel: (630) 766-2112

E-mail: sales@chemimpex.com

Shipping and Correspondence:

935 Dillon Drive

Wood Dale, IL 60191

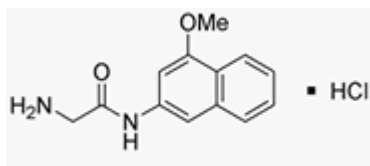
Fax: (630) 766-2218

Web site: www.chemimpex.com

Manufacturing site:

825 Dillon Drive

Wood Dale, IL 60191



Product Specifications

Catalogue Number 06062

Product

Glycine 4-methoxy- β -naphthylamide hydrochloride

Gly-4M β NA•HCl

CAS Number 201930-16-7

Molecular Formula C₁₃H₁₄N₂O₂•HCl

Molecular Weight 266.57

Appearance White powder

Solubility Clear colorless solution (25 mg/mL in 80% Methanol)

Elemental Analysis (Found) C = 58.54 \pm 0.4%; H = 5.67 \pm 0.4%; N = 10.50 \pm 0.4% (Calculated as HCl)

TLC System Chloroform/Methanol/Acetic acid (98-100%)/Water (45:13:1:2)
Chloroform/Methanol/Acetic acid/Water (5:3:1)
Ethyl acetate/Pyridine/Acetic acid/Water (60:30:9:16.5)
Plate: Silica gel 60 F₂₅₄
Detected by: UV, Ninhydrin, Chlorine-tolidine

Related Substances 4-Methoxy-b-naphthylamide: \leq 0.1%

Purity by TLC \geq 99%

Storage Store at 0-8 °C

Additional Information Chloride content: \geq 13%

For Laboratory Use Only