

# Chem-Impex International, Inc.

Tel: (630) 766-2112

E-mail: sales@chemimpex.com

Shipping and Correspondence:

935 Dillon Drive

Wood Dale, IL 60191

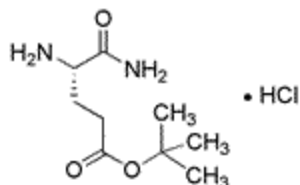
Fax: (630) 766-2218

Web site: www.chemimpex.com

Manufacturing site:

825 Dillon Drive

Wood Dale, IL 60191



## Product Specifications

Catalogue Number	06045
Product	<b>L-Glutamic acid <math>\gamma</math>-<i>tert</i>-butyl ester <math>\alpha</math>-amide hydrochloride</b> L-Glu(OtBu)-NH <sub>2</sub> •HCl  L-Isoglutamine <i>t</i> -butyl ester•HCl
CAS Number	108607-02-9
Molecular Formula	C <sub>9</sub> H <sub>18</sub> N <sub>2</sub> O <sub>3</sub> •HCl
Molecular Weight	238.72
Appearance	White to off-white powder
Solubility	Clear solution (0.3 g in 2 mL Water)
Melting Point	200 - 220 °C
Elemental Analysis (Theory)	≤ 5% (C,H,N)
Water Content (Karl Fisher)	≤ 1.0%
Optical Rotation	[ $\alpha$ ] <sub>D</sub> <sup>20</sup> = +18 ± 2° (C=1 in H <sub>2</sub> O)
Infrared Spectrum	Conforms to structure
Analysis by Mass Spectra	Conforms to standard
Loss on Drying	≤ 2.0% (70 °C, 2h)
<sup>1</sup> H NMR	Coforms to structure
Chiral HPLC	≥ 99.5% (ee)
D-Enantiomer	≤ 0.5%
Purity by HPLC	≥ 99%
Purity by TLC	≥ 98%
Storage	Store at 0-8 °C

# *Product Specifications*

Catalog Number: 06045

---

**For Laboratory Use Only**