

Chem-Impex International, Inc.

Tel: (630) 766-2112

E-mail: sales@chemimpex.com

Shipping and Correspondence:

935 Dillon Drive

Wood Dale, IL 60191

Fax: (630) 766-2218

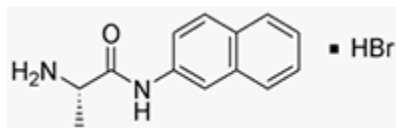
Web site: www.chemimpex.com

Manufacturing site:

825 Dillon Drive

Wood Dale, IL 60191

Product Specifications



Catalogue Number	05840
Product	L-Alanine β-naphthylamide hydrobromide
	L-Ala- β NA•HBr
CAS Number	3513-56-2
Molecular Formula	C ₁₃ H ₁₄ N ₂ O•HBr
Molecular Weight	295.16

Appearance	White powder
Appearance of Solution	Clear solution (50 mg/mL in MeOH)
Melting Point	205 °C
TLC System	Chloroform/Methanol/Acetic acid 32% 5/3/1 Ethylacetate/pyridine/acetic acid/H ₂ O 60/20/6/11 n-butanol/acetic acid/H ₂ O 4/2/2 Plate : Silicagel 60 F ₂₅₄ Detected by : UV, ninhydrin, chlorine-tolidine
Optical Rotation	[α] ²⁴ _D = 9 ± 2 ° (C=1 in MeOH)
Titration	Bromide content : ≤ 27%
Purity by TLC	≥ 99%
Storage	Store at 0 - 8 °C

For Laboratory Use Only