

Chem-Impex International, Inc.

Tel: (630) 766-2112

E-mail: sales@chemimpex.com

Shipping and Correspondence:

935 Dillon Drive

Wood Dale, IL 60191

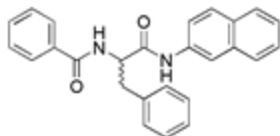
Fax: (630) 766-2218

Web site: www.chemimpex.com

Manufacturing site:

825 Dillon Drive

Wood Dale, IL 60191



Product Specifications

Catalogue Number	05632
Product	Benzoyl-DL-phenylalanine β-naphthylamide
	Bz-DL-Phe- β NA
CAS Number	100900-32-1
Molecular Formula	C ₂₆ H ₂₂ N ₂ O ₂
Molecular Weight	394.3

Appearance	White product
Solubility	clear, colorless solution (50mg/mL in DMF)
Melting Point	135-141 °C
Elemental Analysis (Theory)	C = 79.17%; H = 5.62%; N = 7.10%
Elemental Analysis (Found)	C = 79.17 \pm 0.5%; H = 5.62 \pm 0.5%; N = 7.10 \pm 0.5%
TLC System	Benzene/Dioxane/Acetic acid (95:25:4) Chloroform/Ethyl Acetate/Acetic acid (50:50:2) Plate: Silica gel 60 F ₂₅₄ Detected by: Chlorine-tolidine
Purity by TLC	\geq 99%
Storage	Store at 0-8°C

For Laboratory Use Only