

Chem-Impex International, Inc.

Tel: (630) 766-2112

E-mail: sales@chemimpex.com

Shipping and Correspondence:

935 Dillon Drive

Wood Dale, IL 60191

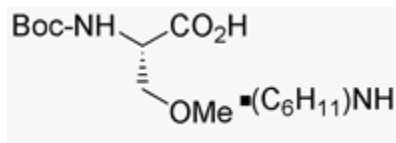
Fax: (630) 766-2218

Web site: www.chemimpex.com

Manufacturing site:

825 Dillon Drive

Wood Dale, IL 60191



Product Specifications

Catalogue Number	05599
Product	Boc-O-methyl-L-serine dicyclohexylammonium salt Boc-L-Ser(Me)-OH•DCHA
CAS Number	51293-47-1 (net)
Molecular Formula	C ₉ H ₁₇ NO ₅ ·C ₁₂ H ₂₃ N
Molecular Weight	400.53

Appearance	White to off-white crystals
Solubility	Clearly soluble (0.5 mmole in 1 mL DMF)
Melting Point	119-125 °C
Water Content (Karl Fisher)	≤ 1.0%
Kaiser Test	Negative to slightly positive
TLC System	Chloroform/Methanol/Acetic acid (90:8:2)
Optical Rotation	[α] _D ²⁵ = +21 ± 3° (C=4 in CHCl ₃)
Infrared Spectrum	Conforms to structure
Purity by HPLC	≥ 98.5%
Purity by TLC	≥ 99%
Storage	Store at 0-8 °C

For Laboratory Use Only