

Chem-Impex International, Inc.

Tel: (630) 766-2112

E-mail: sales@chemimpex.com

Shipping and Correspondence:

935 Dillon Drive

Wood Dale, IL 60191

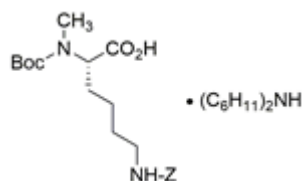
Fax: (630) 766-2218

Web site: www.chemimpex.com

Manufacturing site:

825 Dillon Drive

Wood Dale, IL 60191



Product Specifications

Catalogue Number	05570
Product	N^α-Boc-N^α-methyl-N^ε-Z-L-lysine Boc-N-Me-L-Lys(Z)-OH•DCHA
CAS Number	201002-18-8 (net)
Molecular Formula	C ₂₀ H ₃₀ N ₂ O ₆ •C ₁₂ H ₂₃ N
Molecular Weight	575.79

Appearance	White powder
Solubility	Clear, colorless solution (50 mg/ml in MeOH)
TLC System	Chloroform / ethylacetate / acetic acid : 50/50/2 Toluene / dioxane / acetic acid : 95/25/4 Plate : Silicagel 60 F ₂₅₄ detected by : UV, ninhydrin, chlorine-tolidine
Assay	≥ 99% (Elemental analysis based on Nitrogen content)
Purity	≥ 99%
Storage	Store at 0 - 8 °C

For Laboratory Use Only