

Chem-Impex International, Inc.

Tel: (630) 766-2112

E-mail: sales@chemimpex.com

Shipping and Correspondence:

935 Dillon Drive

Wood Dale, IL 60191

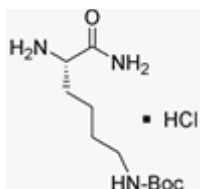
Fax: (630) 766-2218

Web site: www.chemimpex.com

Manufacturing site:

825 Dillon Drive

Wood Dale, IL 60191



Product Specifications

Catalogue Number 05365
Product **N^{ϵ} -Boc-L-lysine amide hydrochloride**

L-Lys(Boc)-NH₂•HCl

CAS Number 112803-72-2
Molecular Formula C₁₁H₂₃N₃O₃•HCl
Molecular Weight 281.8

Appearance White to off-white powder
Solubility Clearly soluble (C=2.5 in MeOH)
Melting Point 180 - 195 °C
Optical Rotation [α]²⁵_D = 16.5 ± 1.5 ° (C=1 in AcOH)
D-Enantiomer ≤ 0.3%
Purity by TLC ≥ 99%
Chiral Purity ≥ 99.7% (ee)
Storage Store at 0 - 8 °C

For Laboratory Use Only