

Chem-Impex International, Inc.

Tel: (630) 766-2112

E-mail: sales@chemimpex.com

Shipping and Correspondence:

935 Dillon Drive

Wood Dale, IL 60191

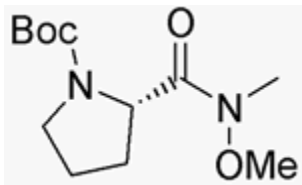
Fax: (630) 766-2218

Web site: www.chemimpex.com

Manufacturing site:

825 Dillon Drive

Wood Dale, IL 60191



Product Specifications

Catalogue Number	05092
Product	Boc-L-proline N,O-dimethylhydroxamide
	Boc-L-Pro-N(OMe)Me
CAS Number	115186-37-3
Molecular Formula	C ₁₂ H ₂₂ N ₂ O ₄
Molecular Weight	258.3
<hr/>	
Appearance	Light yellow liquid
Optical Rotation	[α] _D ²⁵ = -19 ± 2° (C=1 in CHCl ₃)
¹³C NMR	Conforms to structure
¹H NMR	Conforms to structure
Purity by HPLC	≥ 95%
Storage	Store at 0-8 °C

For Laboratory Use Only