

Chem-Impex International, Inc.

Tel: (630) 766-2112

E-mail: sales@chemimpex.com

Shipping and Correspondence:

935 Dillon Drive

Wood Dale, IL 60191

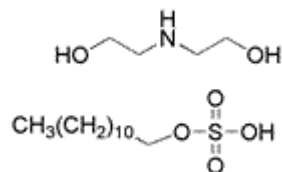
Fax: (630) 766-2218

Web site: www.chemimpex.com

Manufacturing site:

825 Dillon Drive

Wood Dale, IL 60191



Product Specifications

Catalogue Number	05006
Product	Diethanolamine dodecyl sulfate DEA-Lauryl sulfate
CAS Number	143-00-0
Molecular Formula	C ₁₂ H ₂₆ O ₄ S•C ₄ H ₁₁ NO ₂
Molecular Weight	371.54

Appearance	Transparent at 440 nm (90+%) Transparent at 550 nm (90+%)
Color (APHA)	≤ 100
pH	7.3-7.6 (10%)
Active content	36-38%
Storage	Store at RT
Additional Information	DEA Chloride: ≤ 1% DEA Sulfate: ≤ 2% Brookfield Vis. at 25 °C ≤ 300 cP

For Laboratory Use Only