

Chem-Impex International, Inc.

Tel: (630) 766-2112

E-mail: sales@chemimpex.com

Shipping and Correspondence:

935 Dillon Drive

Wood Dale, IL 60191

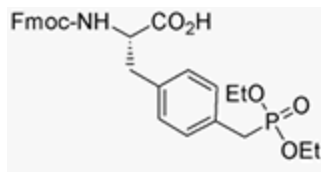
Fax: (630) 766-2218

Web site: www.chemimpex.com

Manufacturing site:

825 Dillon Drive

Wood Dale, IL 60191



Product Specifications

Catalogue Number	04997
Product	Fmoc-4-diethylphosphomethyl-L-phenylalanine Fmoc-L-Phe(4-CH ₂ PO ₃ Et ₂)-OH
CAS Number	160253-13-4
Molecular Formula	C ₂₉ H ₃₂ NO ₇ P
Molecular Weight	537.56
Appearance	White powder
Optical Rotation	[α] _D ²⁰ = -18 ± 2° (C=1 in DMF)
Analysis by Mass Spectra	[M+H] ⁺ = 538 ± 1
Purity by HPLC	≥ 99%
Storage	Store at 0-8°C

For Laboratory Use Only