

Chem-Impex International, Inc.

Tel: (630) 766-2112

E-mail: sales@chemimpex.com

Shipping and Correspondence:

935 Dillon Drive

Wood Dale, IL 60191

Fax: (630) 766-2218

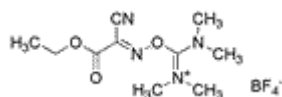
Web site: www.chemimpex.com

Manufacturing site:

825 Dillon Drive

Wood Dale, IL 60191

Product Specifications



Catalogue Number	04884
Product	O-[(Ethoxycarbonyl)cyanomethyleneamino]-TOTU
CAS Number	136849-72-4
Molecular Formula	C ₁₀ H ₁₇ BF ₄ N ₄ O ₃
Molecular Weight	328.08

Appearance	White to off-white crystalline powder
Melting Point	142 - 148 °C
Water Content (Karl Fisher)	≤ 0.2%
Purity by HPLC	≥ 99%
Storage	Store at 0 - 8 °C

For Laboratory Use Only