

# Chem-Impex International, Inc.

---

**Tel:** (630) 766-2112

**E-mail:** sales@chemimpex.com

**Shipping and Correspondence:**

935 Dillon Drive

Wood Dale, IL 60191

**Fax:** (630) 766-2218

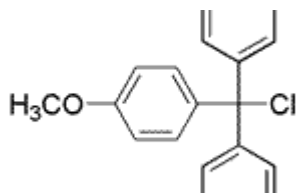
**Web site:** www.chemimpex.com

**Manufacturing site:**

825 Dillon Drive

Wood Dale, IL 60191

---



## Product Specifications

<b>Catalogue Number</b>	04831
<b>Product</b>	<b>4-Methoxytriphenylmethyl chloride</b> 4-Methoxytrityl chloride MMT-Cl
<b>CAS Number</b>	14470-28-1
<b>Molecular Formula</b>	C <sub>20</sub> H <sub>17</sub> ClO
<b>Molecular Weight</b>	308.81

---

<b>Appearance</b>	White to brown crystalline powder
<b>Solubility</b>	Clearly soluble (0.5 mmol in 1 mL DMF)
<b>Melting Point</b>	119 - 125 °C
<b>Water Content (Karl Fisher)</b>	≤ 0.1%
<b>Infrared Spectrum</b>	Conforms to structure
<b>Residual Solvents</b>	Not detected
<b>Assay by titration</b>	≥ 99%
<b>Purity by HPLC</b>	≥ 99%
<b>Purity by TLC</b>	≥ 98%
<b>Storage</b>	Store at 0 - 8 °C

**For Laboratory Use Only**