

Chem-Impex International, Inc.

Tel: (630) 766-2112

E-mail: sales@chemimpex.com

Shipping and Correspondence:

935 Dillon Drive

Wood Dale, IL 60191

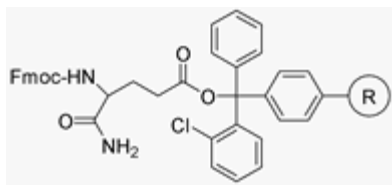
Fax: (630) 766-2218

Web site: www.chemimpex.com

Manufacturing site:

825 Dillon Drive

Wood Dale, IL 60191



Product Specifications

Catalogue Number	04822
Product	Fmoc-L-Glutamic(2-chlorotrityl resin)-NH₂

Appearance	Dark brown beads
Swelling in DMF	≥ 4.0 ml/g in 24h
Kaiser Test	Negative
Infrared Spectrum	Conforms to structure
Residual Solvents	≤ 5.2 % iPrOH ≤ 1.8% Hexanes ≤ 1% DMF
Mesh Size	100 - 200 mesh
Substitution (meq/g)	0.5 - 0.7 mmol/g resin
% DVB	1% DVB (Polystyrene)
Storage	Store at 0-8 °C
Additional Information	Solvent flow : Free flow through a G2 frit

For Laboratory Use Only