

Chem-Impex International, Inc.

Tel: (630) 766-2112

E-mail: sales@chemimpex.com

Shipping and Correspondence:

935 Dillon Drive

Wood Dale, IL 60191

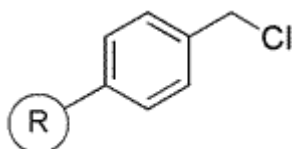
Fax: (630) 766-2218

Web site: www.chemimpex.com

Manufacturing site:

825 Dillon Drive

Wood Dale, IL 60191



Product Specifications

Catalogue Number	04761
Product	Chloromethylated polystyrene Merrifield resin
CAS Number	55844-94-5

Appearance	White polymer or pale to yellow beads
Swelling in DMF	3 - 4 ml/g
Mesh Size	100 - 200 mesh
Substitution (meq/g)	1.0 - 1.5 meq/g
% DVB	2% DVB
Storage	Store at 0 - 8 °C

For Laboratory Use Only