

Chem-Impex International, Inc.

Tel: (630) 766-2112

E-mail: sales@chemimpex.com

Shipping and Correspondence:

935 Dillon Drive

Wood Dale, IL 60191

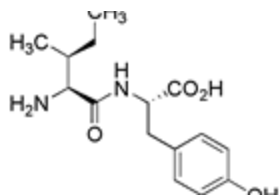
Fax: (630) 766-2218

Web site: www.chemimpex.com

Manufacturing site:

825 Dillon Drive

Wood Dale, IL 60191



Product Specifications

Catalogue Number	04572
Product	Ile-Tyr-OH L-Isoleucyl-L-tyrosine
CAS Number	38579-21-4
Molecular Formula	C ₁₅ H ₂₂ N ₂ O ₄
Molecular Weight	294.35
Appearance	White powder
Purity by HPLC	≥ 99%
ESI-MS	Conforms to standard
Storage	Store at 0-8 °C

For Laboratory Use Only