

Chem-Impex International, Inc.

Tel: (630) 766-2112

E-mail: sales@chemimpex.com

Shipping and Correspondence:

935 Dillon Drive

Wood Dale, IL 60191

Fax: (630) 766-2218

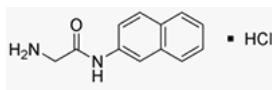
Web site: www.chemimpex.com

Manufacturing site:

825 Dillon Drive

Wood Dale, IL 60191

Product Specifications



Catalogue Number	04550
Product	Glycine β-naphthylamide hydrochloride Gly- β NA•HCl
CAS Number	1208-12-4
Molecular Formula	C ₁₂ H ₁₂ N ₂ O•HCl
Molecular Weight	236.7

Appearance	White powder
Solubility	Clear, colorless solution (50 mg/mL in Methanol)
Elemental Analysis (Theory)	C = 60.7 \pm 0.5%; H = 5.6 \pm 0.5%; N = 11.8 \pm 0.5% calc. x 0.05 H ₂ O (0.4%)
Water Content (Karl Fisher)	\leq 1%
TLC System	Chloroform/methanol/acetic acid 32% (5:3:1) Chloroform/methanol/acetic acid/H ₂ O (70:42:0.5:10) Methanol/chloroform/ammonia 17% (2:2:1) Plate: silicagel 60 F ₂₅₄ Detected by: UV, ninhydrin, TMB
Related Substances	b-Naphthylamine : \leq 0.1%
Titration	\geq 99.5% (Chloride content)
Assay	\geq 98.5% (Nth : 11.83% Elemental analysis)
Purity by TLC	\geq 99%
Storage	Store at 0-8 °C

For Laboratory Use Only