

Chem-Impex International, Inc.

Tel: (630) 766-2112

E-mail: sales@chemimpex.com

Shipping and Correspondence:

935 Dillon Drive

Wood Dale, IL 60191

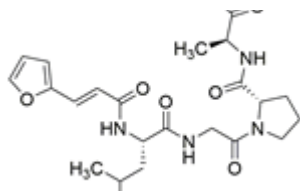
Fax: (630) 766-2218

Web site: www.chemimpex.com

Manufacturing site:

825 Dillon Drive

Wood Dale, IL 60191



Product Specifications

Catalogue Number	04539
Product	FA-Leu-Gly-Pro-Ala-OH
CAS Number	78832-65-2
Molecular Formula	C ₂₃ H ₃₂ N ₄ O ₇
Molecular Weight	476.53

Appearance	White powder
Solubility	2 mg / mL in Methanol
Elemental Analysis (Theory)	C= 55.40 - 57.98% , N= 11.2 - 11.8%
Purity by HPLC	≥ 99%
Storage	Store at -0°C.

For Laboratory Use Only