

# Chem-Impex International, Inc.

---

**Tel:** (630) 766-2112

**E-mail:** sales@chemimpex.com

**Shipping and Correspondence:**

935 Dillon Drive

Wood Dale, IL 60191

**Fax:** (630) 766-2218

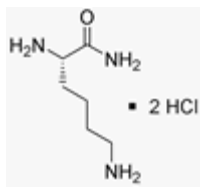
**Web site:** www.chemimpex.com

**Manufacturing site:**

825 Dillon Drive

Wood Dale, IL 60191

---



## Product Specifications

<b>Catalogue Number</b>	04439
<b>Product</b>	<b>L-Lysine amide dihydrochloride</b>
	L-Lys-NH <sub>2</sub> •2HCl
<b>CAS Number</b>	51127-08-3
<b>Molecular Formula</b>	C <sub>6</sub> H <sub>15</sub> N <sub>3</sub> O•2HCl
<b>Molecular Weight</b>	218.2

---

<b>Appearance</b>	White to off-white powder
<b><sup>13</sup>C NMR</b>	Conforms to structure
<b><sup>1</sup>H NMR</b>	Conforms to structure
<b>Purity</b>	≥ 95%
<b>Storage</b>	Store at 0-8°C

**For Laboratory Use Only**