

Chem-Impex International, Inc.

Tel: (630) 766-2112

E-mail: sales@chemimpex.com

Shipping and Correspondence:

935 Dillon Drive

Wood Dale, IL 60191

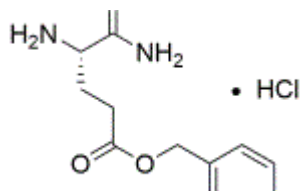
Fax: (630) 766-2218

Web site: www.chemimpex.com

Manufacturing site:

825 Dillon Drive

Wood Dale, IL 60191



Product Specifications

Catalogue Number	04429
Product	L-Glutamic acid γ-benzyl ester α-amide L-Glu(OBzl)-NH ₂ •HCl L-Isoglutamine benzyl ester hydrochloride
CAS Number	63091-89-4
Molecular Formula	C ₁₂ H ₁₆ N ₂ O ₃ •HCl
Molecular Weight	272.5

Appearance	White crystalline powder
Melting Point	180 - 187 °C
Optical Rotation	[α] _D ²⁰ = +16.5 ± 2° (C=1 in MeOH)
Assay by titration	> 99%
Purity by HPLC	≥ 99%
Storage	Store at 0 - 8 °C

For Laboratory Use Only