

# Chem-Impex International, Inc.

---

**Tel:** (630) 766-2112

**E-mail:** sales@chemimpex.com

**Shipping and Correspondence:**

935 Dillon Drive

Wood Dale, IL 60191

**Fax:** (630) 766-2218

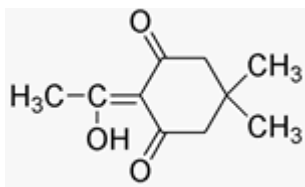
**Web site:** www.chemimpex.com

**Manufacturing site:**

825 Dillon Drive

Wood Dale, IL 60191

---



## Product Specifications

<b>Catalogue Number</b>	04320
<b>Product</b>	<b>2-Acetyldimedone</b> Dde-OH 2-Acetyl-5,5-dimethyl-cyclohexan-1,3-dione
<b>CAS Number</b>	1755-15-3, 94142-97-9
<b>Molecular Formula</b>	C <sub>10</sub> H <sub>14</sub> O <sub>3</sub>
<b>Molecular Weight</b>	182.2

---

<b>Appearance</b>	Yellow solid or crystalline powder
<b><sup>1</sup>H NMR</b>	Conforms to structure
<b>Assay</b>	≥ 98%
<b>Storage</b>	Store at 0 - 8 °C

**For Laboratory Use Only**