

Chem-Impex International, Inc.

Tel: (630) 766-2112

E-mail: sales@chemimpex.com

Shipping and Correspondence:

935 Dillon Drive

Wood Dale, IL 60191

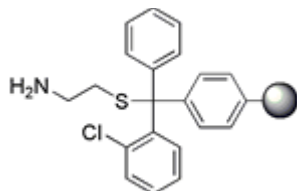
Fax: (630) 766-2218

Web site: www.chemimpex.com

Manufacturing site:

825 Dillon Drive

Wood Dale, IL 60191



Product Specifications

Catalogue Number 04313

Product

Cysteamine 2-chlorotrityl resin

(200-400 mesh 0.4-1.6 meq/g)

H-Aminoethylthio-2-chlorotrityl resin

Appearance Pale yellow

Swelling in DMF ≥ 3.5 mL/g in 24h

Kaiser Test Positive

Infrared Spectrum Conforms to structure

Solvent Solvent free flow through G2 frit

Mesh Size 200 - 400 mesh

Substitution (meq/g) 0.4 - 1.5 meq/g

% DVB 1% DVB

Storage Store at 0 - 8 °C

For Laboratory Use Only