

Chem-Impex International, Inc.

Tel: (630) 766-2112

E-mail: sales@chemimpex.com

Shipping and Correspondence:

935 Dillon Drive

Wood Dale, IL 60191

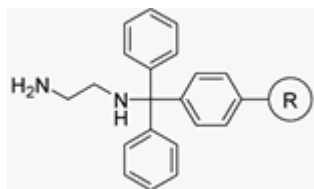
Fax: (630) 766-2218

Web site: www.chemimpex.com

Manufacturing site:

825 Dillon Drive

Wood Dale, IL 60191



Product Specifications

Catalogue Number	04306
Product	1,2-Diaminoethane trityl resin (0.8-1.2 meq/g, 200-400 mesh)

Appearance	Pale yellow to pale brown beads
Swelling in DMF	1 g swells to 2.5 mL min. in 24 h
Kaiser Test	Positive
Infrared Spectrum	Conforms to structure
Residual Solvents	iPrOH : $\leq 3\%$, Hexanes : $\leq 2\%$
Solvent	Solvent flow: Free flow through a G2 frit
Mesh Size	200 - 400 mesh
Substitution (meq/g)	0.8 - 1.2 meq/g
% DVB	1% DVB
Storage	Store at 0 - 8 °C

For Laboratory Use Only