

Chem-Impex International, Inc.

Tel: (630) 766-2112

E-mail: sales@chemimpex.com

Shipping and Correspondence:

935 Dillon Drive

Wood Dale, IL 60191

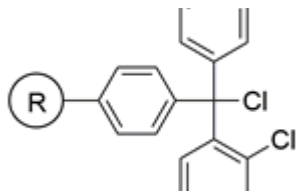
Fax: (630) 766-2218

Web site: www.chemimpex.com

Manufacturing site:

825 Dillon Drive

Wood Dale, IL 60191



Product Specifications

Catalogue Number	04251
Product	2-Chlorotrityl chloride resin 2-Chlorotriphenylmethyl chloride resin
CAS Number	42074-68-0
<hr/>	
Appearance	Yellow beads
Swelling in DCM	4 - 8 mL/g
Swelling in DMF	3 - 6 mL/g
Kaiser Test	Negative
Infrared Spectrum	Conforms to structure
Loss on Drying	≤ 0.5% (40 ± 1 °C at 1 mmHg for 5h)
Mesh Size	200 - 400 mesh
Substitution (meq/g)	0.3 - 0.8 meq/g
% DVB	2% DVB
Storage	Store at 0 - 8 °C

For Laboratory Use Only