

# Chem-Impex International, Inc.

---

**Tel:** (630) 766-2112

**E-mail:** sales@chemimpex.com

**Shipping and Correspondence:**

935 Dillon Drive

Wood Dale, IL 60191

**Fax:** (630) 766-2218

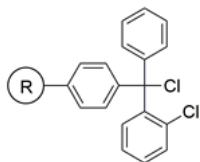
**Web site:** www.chemimpex.com

**Manufacturing site:**

825 Dillon Drive

Wood Dale, IL 60191

---



## Product Specifications

<b>Catalogue Number</b>	04250
<b>Product</b>	<b>2-Chlorotrityl chloride resin</b> (1.0 - 1.8 meq/g, 100 - 200 mesh) 2-Chlorotriphenylmethyl chloride resin

---

<b>Appearance</b>	Yellow beads
<b>Swelling in DCM</b>	4 - 8 mL/g
<b>Swelling in DMF</b>	3 - 6 mL/g
<b>Kaiser Test</b>	Negative
<b>Infrared Spectrum</b>	Conforms to structure
<b>Mesh Size</b>	100 - 200 mesh
<b>Substitution (meq/g)</b>	1.0 - 1.8 meq/g
<b>% DVB</b>	1% DVB
<b>Storage</b>	Store at 0 - 8 °C

**For Laboratory Use Only**