

Chem-Impex International, Inc.

Tel: (630) 766-2112

E-mail: sales@chemimpex.com

Shipping and Correspondence:

935 Dillon Drive

Wood Dale, IL 60191

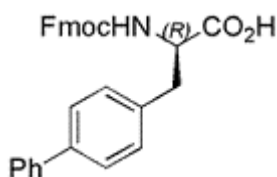
Fax: (630) 766-2218

Web site: www.chemimpex.com

Manufacturing site:

825 Dillon Drive

Wood Dale, IL 60191



Product Specifications

Catalogue Number	04085
Product	Fmoc-<i>p</i>-phenyl-D-Phenylalanine Fmoc- <i>p</i> -phenyl-D-Phenylalanine Fmoc-D-Ala(4,4'-biphenyl)-OH
CAS Number	205526-38-1
Molecular Formula	C ₃₀ H ₂₅ NO ₄
Molecular Weight	463.52

Appearance	White to off-white powder
Solubility	Clear solution (0.3 g in 2 mL DMF)
Melting Point	180 - 183 °C
Water Content (Karl Fisher)	≤ 1%
Optical Rotation	[α] _D ²⁰ = 10 ± 1 ° (C=1 in DMF) [α] _D ²⁰ = -17 ± 1 ° (C=1 in MeOH)
Infrared Spectrum	Conforms to structure
Analysis by Mass Spectra	Conforms to standard
Loss on Drying	≤ 1% (90 °C, 2h)
¹ H NMR	Conforms to structure
Chiral HPLC	≥ 99.5% (ee)
L-Enantiomer	≤ 0.5%
Purity by HPLC	≥ 99%
Storage	Store at 0 - 8 °C

For Laboratory Use Only