

# Chem-Impex International, Inc.

---

**Tel:** (630) 766-2112

**E-mail:** sales@chemimpex.com

**Shipping and Correspondence:**

935 Dillon Drive

Wood Dale, IL 60191

**Fax:** (630) 766-2218

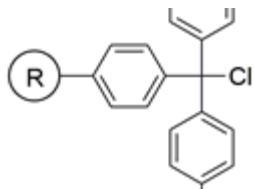
**Web site:** www.chemimpex.com

**Manufacturing site:**

825 Dillon Drive

Wood Dale, IL 60191

---



## Product Specifications

**Catalogue Number** 03904

**Product** **4-Methoxytriphenyl chloride resin**  
4-Methoxytriphenyl chloromethane resin

---

**Appearance** Yellow beads

**Kaiser Test** Negative

**Infrared Spectrum** Conforms to structure

**Loss on Drying**  $\leq 2\%$  (5 h in vacuum oven at  $40 \pm 1^\circ\text{C}$ )

**Mesh Size** 200 - 400 mesh

**Substitution (meq/g)** 1 - 2 mmol/g

**% DVB** 1% DVB

**Storage** Store at  $0 - 8^\circ\text{C}$

**For Laboratory Use Only**