

Chem-Impex International, Inc.

Tel: (630) 766-2112

E-mail: sales@chemimpex.com

Shipping and Correspondence:

935 Dillon Drive

Wood Dale, IL 60191

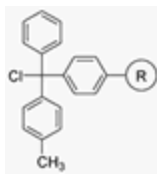
Fax: (630) 766-2218

Web site: www.chemimpex.com

Manufacturing site:

825 Dillon Drive

Wood Dale, IL 60191



Product Specifications

Catalogue Number 03903

Product **4-Methyltrityl chloride resin**

4-Methyltriphenyl chloromethane resin

Appearance Pale yellow to yellow

Mesh Size 200-400 mesh

Substitution (meq/g) 0.2-1.5 meq/g

% DVB 1% DVB

Storage Store at 0-8 °C

For Laboratory Use Only