

Chem-Impex International, Inc.

Tel: (630) 766-2112

E-mail: sales@chemimpex.com

Shipping and Correspondence:

935 Dillon Drive

Wood Dale, IL 60191

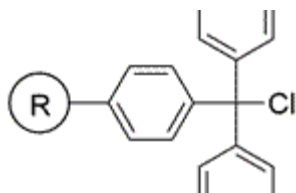
Fax: (630) 766-2218

Web site: www.chemimpex.com

Manufacturing site:

825 Dillon Drive

Wood Dale, IL 60191



Product Specifications

Catalogue Number 03902

Product

Trityl chloride resin

Chlorotriphenylmethane resin

Appearance

Pale yellow to yellow

Swelling in DMF

1g swells to ≤ 4.5 ml in 24h

Infrared Spectrum

Conforms to structure

Residual Solvents

Hexane, Toluene

Mesh Size

100 - 200 mesh

Substitution (meq/g)

1 - 2 meq/g

% DVB

1% DVB

Storage

Store at RT

For Laboratory Use Only