

Chem-Impex International, Inc.

Tel: (630) 766-2112

E-mail: sales@chemimpex.com

Shipping and Correspondence:

935 Dillon Drive

Wood Dale, IL 60191

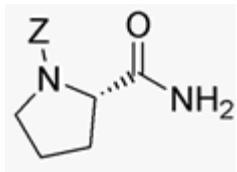
Fax: (630) 766-2218

Web site: www.chemimpex.com

Manufacturing site:

825 Dillon Drive

Wood Dale, IL 60191



Product Specifications

Catalogue Number	03888
Product	Z-L-proline amide
	Z-L-Pro-NH ₂
	(S)-Z-pyrrolidine-2-carboxylic acid amide
CAS Number	34079-31-7
Molecular Formula	C ₁₃ H ₁₆ N ₂ O ₃
Molecular Weight	248.28

Appearance	White crystals
Water Content (Karl Fisher)	≤ 0.5%
Optical Rotation	[α] _D ²⁰ = - 40 ± 2 ° (C=1 in MeOH)
Infrared Spectrum	Conforms to structure
Related Substances	CBZ-D-Prolinamide: ≤ 0.5% L-Prolinamide: ≤ 1.0%
Assay	98 - 102%
Purity by HPLC	≥ 97%
Storage	Store at 0-8°C

For Laboratory Use Only