

Chem-Impex International, Inc.

Tel: (630) 766-2112

E-mail: sales@chemimpex.com

Shipping and Correspondence:

935 Dillon Drive

Wood Dale, IL 60191

Fax: (630) 766-2218

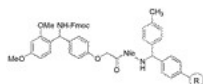
Web site: www.chemimpex.com

Manufacturing site:

825 Dillon Drive

Wood Dale, IL 60191

Product Specifications



Catalogue Number	03642
Product	Rink amide MBHA resin (with Norleucine) (0.3-0.8 mmol/g, 200-400 mesh) Rink amide MBHA resin (with Nle)

Appearance	Pale white or slight yellow beads
Swelling in DCM	5 - 9 mL/g
Swelling in DMF	5 - 8 mL/g
Kaiser Test	Negative
Mesh Size	200 - 400 mesh
Substitution (meq/g)	0.3 - 0.8 mmol/g
% DVB	1% DVB
Storage	Store at 0 - 8 °C

For Laboratory Use Only