

# Chem-Impex International, Inc.

---

**Tel:** (630) 766-2112

**E-mail:** sales@chemimpex.com

**Shipping and Correspondence:**

935 Dillon Drive

Wood Dale, IL 60191

**Fax:** (630) 766-2218

**Web site:** www.chemimpex.com

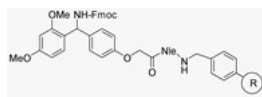
**Manufacturing site:**

825 Dillon Drive

Wood Dale, IL 60191

---

## Product Specifications



<b>Catalogue Number</b>	03538
<b>Product</b>	<b>Rink amide AM resin (with Nle)</b> <b>(0.25 - 0.75 mmol/g, 200-400 mesh)</b>
	4-(2',4'-Dimethoxyphenyl-Fmoc-aminomethyl) phenoxyacetamidonorleucylaminomethyl resin

---

<b>Appearance</b>	Pale white or slight yellow beads
<b>Kaiser Test</b>	Negative
<b>Infrared Spectrum</b>	Conforms to structure
<b>Loss on Drying</b>	≤ 2% (5h in vacuum oven at 40 ± 1 °C)
<b>Mesh Size</b>	200 - 400 mesh
<b>Substitution (meq/g)</b>	0.25 - 0.75 mmol/g
<b>% DVB</b>	1% DVB
<b>Storage</b>	Store at RT

**For Laboratory Use Only**