

Chem-Impex International, Inc.

Tel: (630) 766-2112

E-mail: sales@chemimpex.com

Shipping and Correspondence:

935 Dillon Drive

Wood Dale, IL 60191

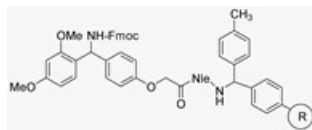
Fax: (630) 766-2218

Web site: www.chemimpex.com

Manufacturing site:

825 Dillon Drive

Wood Dale, IL 60191



Product Specifications

Catalogue Number	03504
Product	4-(2',4'-Dimethoxyphenyl-Fmoc-aminomethyl)phenoxyacetamidonorleucyl MBHA resin (0.4 - 0.6 mmol/g, 100-200 mesh)

Rink amide MBHA resin (with Nle)

Appearance	Pale white or slight yellow beads
Swelling in DCM	1.0 g resin swelling in DCM for 4 h : ≥ 5.2 mL/g
Swelling in DMF	1.0 g resin swelling in DMF for 4 h : ≥ 5.2 mL/g
Kaiser Test	Negative
Infrared Spectrum	Conforms to structure
Loss on Drying	$\leq 2.0\%$ (40 ± 1 °C, 1 mmHg, 5h)
Mesh Size	100 - 200 mesh
Substitution (meq/g)	0.4 - 0.6 mmol/g
% DVB	1% DVB
Storage	Store at 0 - 8 °C

For Laboratory Use Only