

# Chem-Impex International, Inc.

---

Tel: (630) 766-2112

E-mail: sales@chemimpex.com

Shipping and Correspondence:

935 Dillon Drive

Wood Dale, IL 60191

Fax: (630) 766-2218

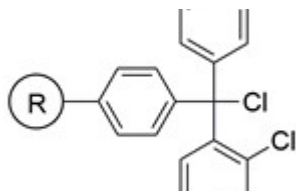
Web site: www.chemimpex.com

Manufacturing site:

825 Dillon Drive

Wood Dale, IL 60191

---



## Product Specifications

Catalogue Number 03498  
Product **2-Chlorotrityl chloride resin**  
(1.0-2.0 meq/g, 100-200 mesh)

2-Chlorotriphenylmethyl chloride resin

---

<b>Appearance</b>	Yellow beads
<b>Swelling in DCM</b>	4 - 8 ml/g
<b>Swelling in DMF</b>	3 - 6 ml/g
<b>Kaiser Test</b>	Negative
<b>Infrared Spectrum</b>	Conforms to structure
<b>Loss on Drying</b>	≤ 2% (5 h in vaccuome oven at 40 ± 1 °C)
<b>Mesh Size</b>	100 - 200 mesh
<b>Substitution (meq/g)</b>	1.0 - 1.6 mmol/g
<b>% DVB</b>	1% DVB
<b>Storage</b>	Store at 0 - 8 °C

**For Laboratory Use Only**