

# Chem-Impex International, Inc.

Tel: (630) 766-2112

E-mail: sales@chemimpex.com

Shipping and Correspondence:

935 Dillon Drive

Wood Dale, IL 60191

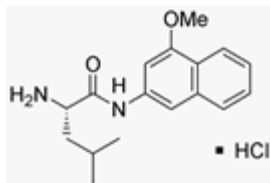
Fax: (630) 766-2218

Web site: www.chemimpex.com

Manufacturing site:

825 Dillon Drive

Wood Dale, IL 60191



## Product Specifications

<b>Catalogue Number</b>	03379
<b>Product</b>	<b>L-Leucine 4-methoxy-<math>\beta</math>-naphthylamide hydrochloride</b> L-Leucine 4-methoxy- $\beta$ -naphthylamide hydrochloride
<b>CAS Number</b>	4467-68-9
<b>Molecular Formula</b>	C <sub>17</sub> H <sub>22</sub> N <sub>2</sub> O <sub>2</sub> ·HCl
<b>Molecular Weight</b>	322.8

<b>Appearance</b>	White powder
<b>Solubility</b>	Clear, colorless solution (50mg/mL in Methanol)
<b>Elemental Analysis (Theory)</b>	C = 63.0%; H = 7.2%; N = 8.6% [Calc. x 1HCl (11.2%, Cl- 10.9%) x 0.1 H <sub>2</sub> O (0.4%)]
<b>Elemental Analysis (Found)</b>	C = 63.0 ± 0.5%; H = 7.2 ± 0.5%; N = 8.6 ± 0.5% [Calc. x 1HCl (11.2%, Cl- 10.9%) x 0.1 H <sub>2</sub> O (0.4%)]
<b>Water Content (Karl Fisher)</b>	≤ 1.0%
<b>TLC System</b>	Ethyl acetate/Pyridine/Acetic acid/H <sub>2</sub> O (60:10:3:4) Chloroform/Methanol/Benzene/H <sub>2</sub> O (8:8:8:1) Chloroform/Methanol/Acetic acid/H <sub>2</sub> O (45:13:1:2) plate: silicagel 60 F254 detected by: UV, ninhydrin, chlorine-tolidine
<b>Titration</b>	Chloride content: ≥ 10.0% (AgNO <sub>3</sub> )
<b>Purity by TLC</b>	≥ 99%
<b>ESI-MS</b>	M = 286 ± 1
<b>Storage</b>	Store at 0-8°C

# *Product Specifications*

Catalog Number: 03379

---

**For Laboratory Use Only**