

# Chem-Impex International, Inc.

---

**Tel:** (630) 766-2112

**E-mail:** sales@chemimpex.com

**Shipping and Correspondence:**

935 Dillon Drive

Wood Dale, IL 60191

**Fax:** (630) 766-2218

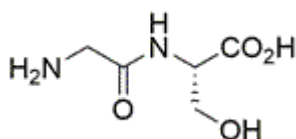
**Web site:** www.chemimpex.com

**Manufacturing site:**

825 Dillon Drive

Wood Dale, IL 60191

---



## Product Specifications

<b>Catalogue Number</b>	03367
<b>Product</b>	<b>Gly-Ser-OH</b> Glycyl-L-serine
<b>CAS Number</b>	7361-43-5
<b>Molecular Formula</b>	C <sub>5</sub> H <sub>10</sub> N <sub>2</sub> O <sub>4</sub>
<b>Molecular Weight</b>	162.15

---

<b>Appearance</b>	White to off-white solid
<b>Analysis by Mass Spectra</b>	Conforms to standard
<b><sup>1</sup>H NMR</b>	Conforms to structure
<b>Purity</b>	≥ 98% (ELSD)
<b>Storage</b>	Store at 0 - 8 °C

**For Laboratory Use Only**