

Chem-Impex International, Inc.

Tel: (630) 766-2112

E-mail: sales@chemimpex.com

Shipping and Correspondence:

935 Dillon Drive

Wood Dale, IL 60191

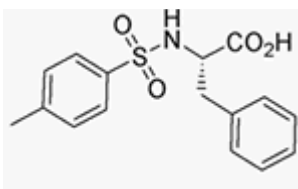
Fax: (630) 766-2218

Web site: www.chemimpex.com

Manufacturing site:

825 Dillon Drive

Wood Dale, IL 60191



Product Specifications

Catalogue Number	03112
Product	Tosyl-L-phenylalanine
	Tos-L-Phe-OH
CAS Number	13505-32-3
Molecular Formula	C ₁₆ H ₁₇ NO ₄ S
Molecular Weight	319.4

Appearance	White to off-white solid
Solubility	0.3 gram in 2 ml DMF clear solution
Melting Point	162-166 °C
Optical Rotation	[α] _D ²⁰ = -16.7 ± 2° (C=1 in DMF)
Analysis by Mass Spectra	Conforms to structure
Purity by HPLC	≥ 98%
Storage	Store at 0-8°C

For Laboratory Use Only