

Chem-Impex International, Inc.

Tel: (630) 766-2112

E-mail: sales@chemimpex.com

Shipping and Correspondence:

935 Dillon Drive

Wood Dale, IL 60191

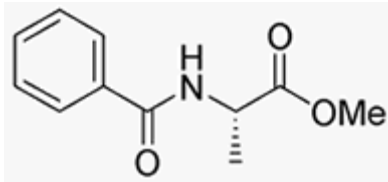
Fax: (630) 766-2218

Web site: www.chemimpex.com

Manufacturing site:

825 Dillon Drive

Wood Dale, IL 60191



Product Specifications

Catalogue Number	03019
Product	Benzoyl-L-alanine methyl ester
	Bz-L-Ala-OMe
CAS Number	7244-67-9
Molecular Formula	C ₁₁ H ₁₃ NO ₃
Molecular Weight	207.2

Appearance	White powder
Solubility	Clear, colorless solution (50 mg/mL in Methanol)
Melting Point	61 - 63 °C
Elemental Analysis (Theory)	C = 63.76 ± 0.5%, H = 6.32 ± 0.5%, N = 6.76 ± 0.5%
Water Content (Karl Fisher)	≤ 1%
TLC System	Chloroform/Methanol/Acetic acid (90/8/2) Chloroform/Methanol/Toluene/Water (8/8/8/1) Toluene/dioxane/Acetic acid (95/25/4) Plate Silicagel 60 F ₂₅₄ Detected by UV, Ninhydrin, chlorine-tolidine
Purity by TLC	≥ 99%
Storage	Store at 0 - 8 °C

For Laboratory Use Only