

Chem-Impex International, Inc.

Tel: (630) 766-2112

E-mail: sales@chemimpex.com

Shipping and Correspondence:

935 Dillon Drive

Wood Dale, IL 60191

Fax: (630) 766-2218

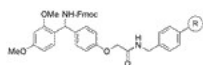
Web site: www.chemimpex.com

Manufacturing site:

825 Dillon Drive

Wood Dale, IL 60191

Product Specifications



Catalogue Number	02900
Product	Rink amide AM resin (0.3 - 1.2 mmol/g, 100-200 mesh)
	4-(2',4'-Dimethoxyphenyl-Fmoc-aminomethyl) phenoxyacetamidoaminomethyl resin
CAS Number	183599-10-2

Appearance	Pale white or slight yellow beads
Infrared Spectrum	Conforms to structure
Mesh Size	100 - 200
Substitution (meq/g)	0.3 - 1.2 mmol/g
% DVB	1% DVB
Storage	Store at RT

For Laboratory Use Only