

Chem-Impex International, Inc.

Tel: (630) 766-2112

E-mail: sales@chemimpex.com

Shipping and Correspondence:

935 Dillon Drive

Wood Dale, IL 60191

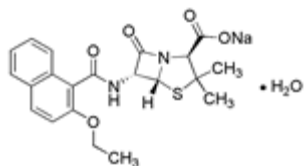
Fax: (630) 766-2218

Web site: www.chemimpex.com

Manufacturing site:

825 Dillon Drive

Wood Dale, IL 60191



Product Specifications

Catalogue Number	02871
Product	Nafcillin sodium salt 6-(2-Ethoxy-1-naphthamido)penicillin sodium salt Sodium nafcillin
CAS Number	985-16-0
Molecular Formula	C ₂₁ H ₂₁ N ₂ O ₅ SNa
Molecular Weight	436.5

Appearance	White pale yellow powder
Solubility	Clear, colorless solution (50 mg/mL in water)
Potency (Anhydrous Basis)	≥ 850 µg/mg
Storage	Store at 0-8°C

For Laboratory Use Only