

# Chem-Impex International, Inc.

---

**Tel:** (630) 766-2112

**E-mail:** sales@chemimpex.com

**Shipping and Correspondence:**

935 Dillon Drive

Wood Dale, IL 60191

**Fax:** (630) 766-2218

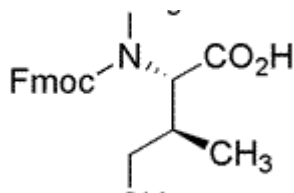
**Web site:** www.chemimpex.com

**Manufacturing site:**

825 Dillon Drive

Wood Dale, IL 60191

---



## Product Specifications

<b>Catalogue Number</b>	02657
<b>Product</b>	<b>Fmoc-N-methyl-L-iso-leucine</b> Fmoc-N-Me-L-Ile-OH
<b>CAS Number</b>	138775-22-1
<b>Molecular Formula</b>	C <sub>22</sub> H <sub>25</sub> NO <sub>4</sub>
<b>Molecular Weight</b>	367.4

---

<b>Appearance</b>	White powder
<b>Solubility</b>	Clear solution (0.3 g in 2 mL DMF)
<b>Melting Point</b>	168 - 176 °C
<b>Optical Rotation</b>	[α] <sub>D</sub> <sup>20</sup> = -59 ± 2 ° (C=1 in DMF)
<b>Infrared Spectrum</b>	Conforms to structure
<b>Analysis by Mass Spectra</b>	Conforms to standard
<b><sup>1</sup>H NMR</b>	Conforms to structure
<b>Purity by HPLC</b>	≥ 99%
<b>Storage</b>	Store at 0-8 °C

**For Laboratory Use Only**