

# Chem-Impex International, Inc.

---

**Tel:** (630) 766-2112

**E-mail:** sales@chemimpex.com

**Shipping and Correspondence:**

935 Dillon Drive

Wood Dale, IL 60191

**Fax:** (630) 766-2218

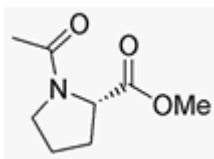
**Web site:** www.chemimpex.com

**Manufacturing site:**

825 Dillon Drive

Wood Dale, IL 60191

---



## Product Specifications

<b>Catalogue Number</b>	02634
<b>Product</b>	<b>Acetyl-L-proline methyl ester</b> Ac-L-Pro-OMe (S)-Acetyl-pyrrolidine-2-carboxylic acid methyl ester
<b>CAS Number</b>	27460-51-1
<b>Molecular Formula</b>	C <sub>8</sub> H <sub>13</sub> NO <sub>3</sub>
<b>Molecular Weight</b>	171.2

---

<b>Appearance</b>	Yellowish to colorless or pale yellow liquid
<b>Optical Rotation</b>	[α] <sub>D</sub> <sup>20</sup> = -63 to -67 ° (C=0.5 in CH <sub>2</sub> Cl <sub>2</sub> ) [α] <sub>D</sub> <sup>20</sup> = -56 ± 1 ° (C=1 in DMF)
<b>Purity by HPLC</b>	≥ 98%
<b>Storage</b>	Store at RT

**For Laboratory Use Only**