

Chem-Impex International, Inc.

Tel: (630) 766-2112

E-mail: sales@chemimpex.com

Shipping and Correspondence:

935 Dillon Drive

Wood Dale, IL 60191

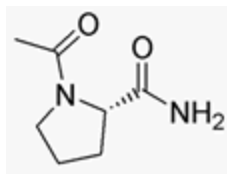
Fax: (630) 766-2218

Web site: www.chemimpex.com

Manufacturing site:

825 Dillon Drive

Wood Dale, IL 60191



Product Specifications

Catalogue Number 02633

Product

Acetyl-L-proline amide

Ac-L-Pro-NH₂

(S)-Acetyl-pyrrolidine-2-carboxylic acid amide

CAS Number 16395-58-7

Molecular Formula C₇H₁₂N₂O₂

Molecular Weight 156.2

Appearance White powder

Solubility Clear, colorless solution (50 mg/ml in MeOH)

Melting Point 148 - 150 °C

Elemental Analysis (Theory) C=53.89% ± 0.4, H=7.92% ± 0.4, N=17.98% ± 0.4

Water Content (Karl Fisher) 0.5%

TLC System Chloroform / methanol / acetic acid (98-100%) / water 45/13/1/2
Chloroform / methanol / acetic acid / water 70/42/0.5/10
Plate: Silicagel 60 F₂₅₄
Detected by : UV, ninhydrin, chlorine-tolidine

Purity by TLC ≥ 99%

Storage Store at RT

For Laboratory Use Only