

Chem-Impex International, Inc.

Tel: (630) 766-2112

E-mail: sales@chemimpex.com

Shipping and Correspondence:

935 Dillon Drive

Wood Dale, IL 60191

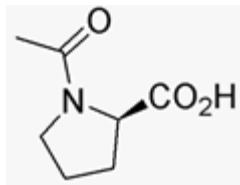
Fax: (630) 766-2218

Web site: www.chemimpex.com

Manufacturing site:

825 Dillon Drive

Wood Dale, IL 60191



Product Specifications

Catalogue Number 02632
Product **Acetyl-D-proline**

Acetyl-D-proline

CAS Number 59785-68-1

Molecular Formula C₇H₁₁NO₃

Molecular Weight 157.2

Appearance White crystal powder

Melting Point 111-117 °C

Optical Rotation [α]_D²⁰ = +113 ± 2° (C=2 in H₂O)

Assay ≥ 98%

Storage Store at 0-8 °C

For Laboratory Use Only