

Chem-Impex International, Inc.

Tel: (630) 766-2112

E-mail: sales@chemimpex.com

Shipping and Correspondence:

935 Dillon Drive

Wood Dale, IL 60191

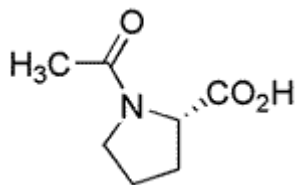
Fax: (630) 766-2218

Web site: www.chemimpex.com

Manufacturing site:

825 Dillon Drive

Wood Dale, IL 60191



Product Specifications

Catalogue Number	02631
Product	Acetyl-L-proline Ac-L-Pro-OH (S)-Acetyl-pyrrolidine-2-carboxylic acid
CAS Number	68-95-1
Molecular Formula	C ₇ H ₁₁ NO ₃
Molecular Weight	157.2

Appearance	White powder or crystalline powder
Melting Point	128 - 143 °C
Optical Rotation	[α] ²⁰ _D = -111 to -115 ° (C=1 in Water)
Assay	≥ 98%
Storage	Store at RT

For Laboratory Use Only