

Chem-Impex International, Inc.

Tel: (630) 766-2112

E-mail: sales@chemimpex.com

Shipping and Correspondence:

935 Dillon Drive

Wood Dale, IL 60191

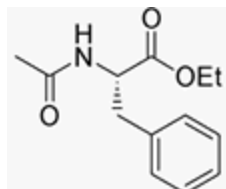
Fax: (630) 766-2218

Web site: www.chemimpex.com

Manufacturing site:

825 Dillon Drive

Wood Dale, IL 60191



Product Specifications

Catalogue Number	02629
Product	Acetyl-L-phenylalanine ethyl ester
	Ac-L-Phe-OEt
CAS Number	2361-96-8
Molecular Formula	C ₁₃ H ₁₇ NO ₃
Molecular Weight	235.3
<hr/>	
Appearance	White powder
Solubility	Clear, colorless solution (50 mg/mL in Methanol)
Melting Point	87-93 °C
Optical Rotation	[α] _D ²⁴ = +13 ± 2°
Purity by HPLC	≥ 99%
Purity by TLC	≥ 99%
Storage	Store at 0-8 °C

For Laboratory Use Only