

# Chem-Impex International, Inc.

---

**Tel:** (630) 766-2112

**E-mail:** sales@chemimpex.com

**Shipping and Correspondence:**

935 Dillon Drive

Wood Dale, IL 60191

**Fax:** (630) 766-2218

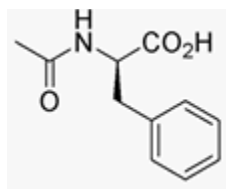
**Web site:** www.chemimpex.com

**Manufacturing site:**

825 Dillon Drive

Wood Dale, IL 60191

---



## Product Specifications

<b>Catalogue Number</b>	02627
<b>Product</b>	<b>Acetyl-D-phenylalanine</b>
	Ac-D-Phe-OH
<b>CAS Number</b>	10172-89-1
<b>Molecular Formula</b>	C <sub>11</sub> H <sub>13</sub> NO <sub>3</sub>
<b>Molecular Weight</b>	207.2

---

<b>Appearance</b>	White to off-white crystalline powder
<b>Water Content (Karl Fisher)</b>	≤ 0.5%
<b>Optical Rotation</b>	[α] <sub>D</sub> <sup>20</sup> = - 38.7 to - 42.7° (C=1 in Methanol)
<b>Assay</b>	98 - 101%
<b>Storage</b>	Store at 0-8°C

**For Laboratory Use Only**