

Chem-Impex International, Inc.

Tel: (630) 766-2112

E-mail: sales@chemimpex.com

Shipping and Correspondence:

935 Dillon Drive

Wood Dale, IL 60191

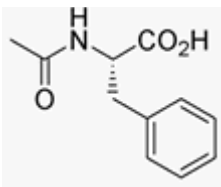
Fax: (630) 766-2218

Web site: www.chemimpex.com

Manufacturing site:

825 Dillon Drive

Wood Dale, IL 60191



Product Specifications

Catalogue Number	02626
Product	Acetyl-L-phenylalanine
	Acetyl-L-phenylalanine
CAS Number	2018-61-3
Molecular Formula	C ₁₁ H ₁₃ NO ₃
Molecular Weight	207.2

Appearance	White powder
Solubility	Clear solution (0.3 g in 2 mL DMF)
Melting Point	158-174 °C
Water Content (Karl Fisher)	≤ 1.0%
Optical Rotation	[α] _D ²⁰ = +39.0 ± 2° (C=1 in DMF)
Analysis by Mass Spectra	Conforms to standard
Loss on Drying	≤ 1.0% (70 °C, 2h)
Purity by HPLC	≥ 99%
Storage	Store at 0-8 °C

For Laboratory Use Only