

# Chem-Impex International, Inc.

---

**Tel:** (630) 766-2112

**E-mail:** sales@chemimpex.com

**Shipping and Correspondence:**

935 Dillon Drive

Wood Dale, IL 60191

**Fax:** (630) 766-2218

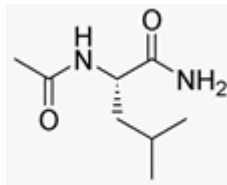
**Web site:** www.chemimpex.com

**Manufacturing site:**

825 Dillon Drive

Wood Dale, IL 60191

---



## Product Specifications

<b>Catalogue Number</b>	02619
<b>Product</b>	<b>Acetyl-L-leucine amide</b> Ac-L-Leu-NH <sub>2</sub>
<b>CAS Number</b>	28529-34-2
<b>Molecular Formula</b>	C <sub>8</sub> H <sub>16</sub> N <sub>2</sub> O <sub>2</sub>
<b>Molecular Weight</b>	172.2
<hr/>	
<b>Appearance</b>	White powder
<b>Solubility</b>	Clear, colorless solution (50 mg/mL in Methanol)
<b>Elemental Analysis (Theory)</b>	C = 55.8 ± 0.5%, H = 9.4 ± 0.5%; N = 16.3 ± 0.5%
<b>Water Content (Karl Fisher)</b>	≤ 3%
<b>TLC System</b>	Chloroform/Methanol/Acetic acid/Water (45/13/1/2) Chloroform/Methanol (8/2) Plate: Silica gel 60 F <sub>254</sub> Detected by : UV, ninhydrin, chlorine-tolidine
<b>Optical Rotation</b>	[α] <sup>24</sup> <sub>D</sub> = -21 ± 1 °
<b>Assay</b>	≥ 99% (Nth 16.27% by Elemental analysis)
<b>Purity by TLC</b>	≥ 99%
<b>Storage</b>	Store at 0 - 8 °C

**For Laboratory Use Only**