

# Chem-Impex International, Inc.

---

**Tel:** (630) 766-2112

**E-mail:** sales@chemimpex.com

**Shipping and Correspondence:**

935 Dillon Drive

Wood Dale, IL 60191

**Fax:** (630) 766-2218

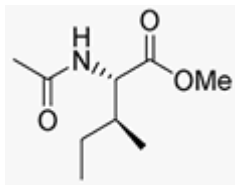
**Web site:** www.chemimpex.com

**Manufacturing site:**

825 Dillon Drive

Wood Dale, IL 60191

---



## Product Specifications

<b>Catalogue Number</b>	02616
<b>Product</b>	<b>Acetyl-L-isoleucine methyl ester</b>
	Ac-L-Ile-OMe
<b>CAS Number</b>	2256-76-0
<b>Molecular Formula</b>	C <sub>9</sub> H <sub>17</sub> NO <sub>3</sub>
<b>Molecular Weight</b>	187.2

---

<b>Appearance</b>	White powder
<b>Appearance of Solution</b>	Clear, colorless solution (50 mg/mL in Methanol)
<b>Melting Point</b>	54 - 56 °C
<b>Elemental Analysis (Theory)</b>	C = 57.73 ± 0.5%, H = 9.15 ± 0.5%, N = 7.48 ± 0.5%
<b>TLC System</b>	Chloroform/Methanol/Benzene/H <sub>2</sub> O (8/8/8/1) Chloroform/Methanol (9/1) Benzene/Dioxane/Acetic acid (95/25/4) Plate : Silicagel 60 F <sub>254</sub> Detected by : UV, ninhydrin, Chlorine-tolidine
<b>Purity by TLC</b>	≥ 99%
<b>Storage</b>	Store at 0 - 8 °C

**For Laboratory Use Only**